

# XBD-QDL

## Технические характеристики

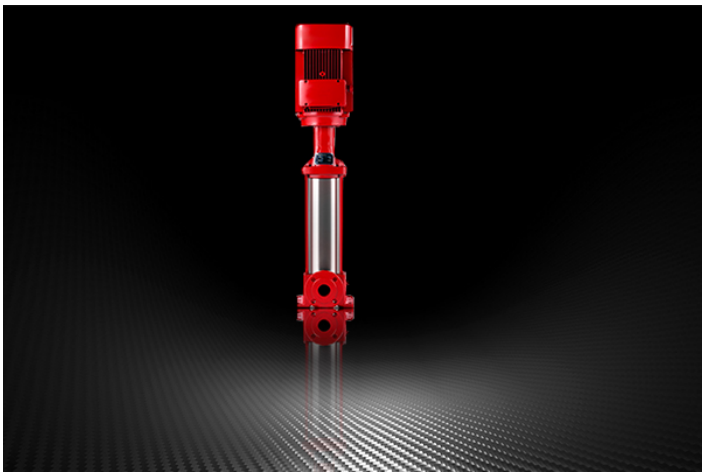
### По вопросам продаж и поддержки обращайтесь:

Алматы (7273)495-231  
Архангельск (8182)63-90-72  
Астрахань (8512)99-46-04  
Барнаул (3852)73-04-60  
Белгород (4722)40-23-64  
Брянск (4832)59-03-52  
Владивосток (423)249-28-31  
Волгоград (844)278-03-48  
Вологда (8172)26-41-59  
Воронеж (473)204-51-73  
Екатеринбург (343)384-55-89  
Иваново (4932)77-34-06  
Ижевск (3412)26-03-58  
Иркутск (395)279-98-46  
Россия (495)268-04-70

Казань (843)206-01-48  
Калининград (4012)72-03-81  
Калуга (4842)92-23-67  
Кемерово (3842)65-04-62  
Киров (8332)68-02-04  
Краснодар (861)203-40-90  
Красноярск (391)204-63-61  
Курск (4712)77-13-04  
Липецк (4742)52-20-81  
Магнитогорск (3519)55-03-13  
Москва (495)268-04-70  
Мурманск (8152)59-64-93  
Набережные Челны (8552)20-53-41  
Нижний Новгород (831)429-08-12  
Киргизия (996)312-96-26-47

Новокузнецк (3843)20-46-81  
Новосибирск (383)227-86-73  
Омск (3812)21-46-40  
Орел (4862)44-53-42  
Оренбург (3532)37-68-04  
Пенза (8412)22-31-16  
Пермь (342)205-81-47  
Ростов-на-Дону (863)308-18-15  
Рязань (4912)46-61-64  
Самара (846)206-03-16  
Санкт-Петербург (812)309-46-40  
Саратов (845)249-38-78  
Севастополь (8692)22-31-93  
Симферополь (3652)67-13-56  
Казахстан (7172)727-132

Смоленск (4812)29-41-54  
Сочи (862)225-72-31  
Ставрополь (8652)20-65-13  
Сургут (3462)77-98-35  
Тверь (4822)63-31-35  
Томск (3822)98-41-53  
Тула (4872)74-02-29  
Тюмень (3452)66-21-18  
Ульяновск (8422)24-23-59  
Уфа (347)229-48-12  
Хабаровск (4212)92-98-04  
Челябинск (351)202-03-61  
Череповец (8202)49-02-64  
Ярославль (4852)69-52-93



## XBD-QDL Fire Pump Series

Flow: 5 ~ 20L/S

Head: 0.50 ~ 1.98Mpa

Power: 3 ~ 37kw

### Details

As a long-established water pump manufacturer, Shanghai Liansheng Pump Manufacturing Co., Ltd. products cover life (stainless steel silent water pump; single-stage single-suction centrifugal pump; permanent magnet motor pump; water-cooled motor pump; non-negative pressure water supply equipment; secondary water supply equipment; constant pressure variable frequency water pump), fire protection (vertical single-stage single-suction fire pump; horizontal multi-stage fire pump), sewage field (integrated prefabricated pump station; submersible sewage pump; automatic stirring and cutting sewage pump), air conditioning pump (Single-stage single-suction circulating pump) provides integrated water supply and drainage treatment solutions; set up clean water pump agents, sewage pump agents and fire pump agents in many parts of the country.

#### Conditions of Use

XBD-QDL series is suitable for conveying clean water and liquids similar to clean water with a temperature not exceeding 50 °C, suitable for fire water supply and other water supply.

#### Performance parameters

XBD series has a total of 66 specifications and its performance parameters range as follows:

Rated flow  $Q=5 \sim 20\text{L/S}$  Rated pressure  $\text{Mpa}=0.50 \sim 1.98\text{Mpa}$  Speed  $n=2900\text{r/min}$  Power  $P=3 \sim 37\text{kw}$   
Suction port diameter  $D_{na}=50 \sim 100\text{mm}$  Discharge port diameter  $D_{nm}=50 \sim 100\text{mm}$  Working pressure  $\leq 30\text{bar}$



## High Quality Jockey Fire Pump Boiler Feed Water Pump

### Overview

---

#### Quick Details

Brand Name:	LYSON
Model Number:	XBD3.1/1W-QDL
Place of Origin:	Shanghai, China
Pressure:	High Pressure
Structure:	Multistage Pump
Usage:	Water
Power:	Electric
Application:	Transfer water
Fuel:	Electric
Theory:	Centrifugal Pump
Standard or Nonstandard:	Standard
Material:	Stainless Steel 304
Product name:	high pressure centrifugal pump
Voltage:	220V/380V
Motor:	100% Copper Wire
Certificate:	CE Certificate
Warranty:	1 Year
Feature:	High Efficiency
Type:	Vertical

---

## Product details

### Production Description:

#### Product Introduction:

LQDL/LQDLF consists of a electric motor and a pump head. Motor shaft is connected to pump shaft with coupler. They may be directly installed in horizontal pipeline systems to get compact structures and save space.

#### Product Application

The LQDL pumps and the LQDLF pumps are multifunctional products, which can be used for conveying diversified mediums such as running water and industrial liquids. They are applicable to different temperature ranges, flow ranges, and pressure ranges. The LQDL pumps are applied to noncorrosive liquids, and the LQDLF pumps are applied to slightly corrosive liquids.

### Specification

Product Name:	LQDL/LQDLF Stainless Steel Vertical Multistage Centrifugal Water Pump
Material:	Cast iron/Stainless Steel
Seal Material:	Graphite/ silicon carbide
Max. Flow:	240m3/h/ 1057GPM
Max. Head:	300m
Max. Pressure:	33bar/479psi
Max. Workingtemperat	120°C/248F
Max. rev:	2950rpm
Motor Power:	0.37kw~132kw
Voltage:	220V.380V
Motor:	AFT, 50hz/60hz
Available Connection:	Flange(EN1092-2,ISO7005-2)
Operated:	Electric
Application Scope:	Water supply, Heating system, Industrial production, fire-fighting system, air-conditioning system,Irrigation
Packaging Details:	Wooden box
Delivery details:	7-20 days after receiving payment
Brand:	LYSON or OEM



International Certified Vertical Multistage Electircs Fire Fighting Pump Jockey Pump

## Overview

### Quick Details

Brand Name:	LYSON
Model Number:	XBD11.0/2W-QDL
Place of Origin:	Shanghai, China
Pressure:	High Pressure
Structure:	Multistage Pump
Usage:	Water
Power:	Electric
Standard or Nonstandard:	Standard
Application:	FIRE
Theory:	Other
Fuel:	Other
Product name:	International Certified Vertical Multistage Stainless Steel Fi...
Material:	Steel
Voltage:	220V/380V
Certificate:	ISO9001:2008
Color:	Red
Type:	fire
Warranty:	1 Year
Name:	DC PUMP
Motor:	DC Motor
Feature:	High Efficiency

## Product details

### Production Description:

#### Product Introduction:

consists of a electric motor and a pump head. Motor shaft is connected to pump shaft with coupler. They may be directly installed in horizontal pipeline systems to get compact structures and save space.

#### Product Application

The LQDL pumps and the LQDLF pumps are multifunctional products, which can be used for conveying diversified mediums such as running water and industrial liquids. They are applicable to different temperature ranges, flow ranges, and pressure ranges. The LQDL pumps are applied to noncorrosive liquids, and the LQDLF pumps are applied to slightly corrosive liquids.

### Specification

Product Name:	Stainless Steel Vertical Multistage Centrifugal Water Pump
Material:	Cast iron/Stainless Steel
Seal Material:	Graphite/ silicon carbide
Max. Flow:	240m3/h/ 1057GPM
Max. Head:	300m
Max. Pressure:	33bar/479psi
Max Workingtemperat	120°C/248F
Max. rev:	2950rpm
Motor Power:	0.37kw~132kw
Voltage:	220V.380V
Motor:	AFT, 50hz/60hz
Available Connection:	Flange(EN1092-2,ISO7005-2)
Operated:	Electric
Application Scope:	Water supply, Heating system, Industrial production, fire-fighting system, air-conditioning system,Irrigation
Packaging Details:	Wooden box
Delivery details:	7-20 days after receiving payment
Brand:	LYSON or OEM



XBD-QDL Electrical Jokey Pump for fire hydrant system

## Overview

### Quick Details

Brand Name:	LYSON
Model Number:	XBD5.5/20G-QDL
Place of Origin:	Shanghai,China (Mainland)
Pressure:	High Pressure
Structure:	Multistage Pump
Theory:	Centrifugal Pump
Power:	Electric
Standard or Nonstandard:	Standard
Application:	Submersible
Usage:	Fire
Fuel:	Electric
Material:	Cast Steel
Voltage:	220V/380V
Product name:	Piston Pump Unit
Warranty:	1 Year
Size:	Standard Size
Model:	Multistage Submersible Pumps
Feature:	High Efficiency
Motor:	100% Copper Wire
Flow rate:	31 - 200 L/M
Certificate:	ISO9001:2008

## product details

### Production Description:

#### Product Introduction:

LQDL/LQDLF consists of a electric motor and a pump head. Motor shaft is connected to pump shaft with coupler. They may be directly installed in horizontal pipeline systems to get compact structures and save space.

#### Product Application

The LQDL pumps and the LQDLF pumps are multifunctional products, which can be used for conveying diversified mediums such as running water and industrial liquids. They are applicable to different temperature ranges, flow ranges, and pressure ranges. The LQDL pumps are applied to noncorrosive liquids, and the LQDLF pumps are applied to slightly corrosive liquids.

### Specification

Product Name:	LQDL/LQDLF Stainless Steel Vertical Multistage Centrifugal Water Pump
Material:	Cast iron/Stainless Steel
Seal Material:	Graphite/ silicon carbide
Max. Flow:	240m3/h/ 1057GPM
Max. Head:	300m
Max. Pressure:	33bar/479psi
Max. Workingtemperat	120°C/248F
Max. rev:	2950rpm
Motor Power:	0.37kw~132kw
Voltage:	220V.380V
Motor:	AFT, 50hz/60hz
Available Connection:	Flange(EN1092-2,ISO7005-2)
Operated:	Electric
Application Scope:	Water supply, Heating system, Industrial production, fire-fighting system, air-conditioning system,Irrigation
Packaging Details:	Wooden box
Delivery details:	7-20 days after receiving payment
Brand:	LYSON or OEM





Manufacturing Plant Vertical Multistage Jockey Fire Pump Electric Motor Driven Fire Pump  
High Quality Italy Fire Pump

## Overview

### Quick Details

Brand Name:	LYSON
Model Number:	XBD12.7/3W-QDL
Place of Origin:	Shanghai, China
Pressure:	High Pressure
Structure:	Multistage Pump
Theory:	Centrifugal Pump
Usage:	Water
Power:	Electric
Standard or Nonstandard:	Standard
Fuel:	Diesel
Application:	FIRE
Product name:	Manufacturing Plant Vertical Multistage Jockey Fire Pump
Material:	Steel
Voltage:	220V/380V
Certificate:	ISO9001:2008
Warranty:	1 Year
Type:	Watering
Color:	Red
Name:	DC PUMP
Feature:	High Efficiency
Motor:	DC Motor

## Product details

### Production Description:

#### Product Introduction:

LQDL/LQDLF consists of a electric motor and a pump head. Motor shaft is connected to pump shaft with coupler. They may be directly installed in horizontal pipeline systems to get compact structures and save space.

#### Product Application

The LQDL pumps and the LQDLF pumps are multifunctional products, which can be used for conveying diversified mediums such as running water and industrial liquids. They are applicable to different temperature ranges, flow ranges, and pressure ranges. The LQDL pumps are applied to noncorrosive liquids, and the LQDLF pumps are applied to slightly corrosive liquids.

### Specification

Product Name:	LQDL/LQDLF Stainless Steel Vertical Multistage Centrifugal Water Pump
Material:	Cast iron/Stainless Steel
Seal Material:	Graphite/ silicon carbide
Max. Flow:	240m3/h/ 1057GPM
Max. Head:	300m
Max. Pressure:	33bar/479psi
Max Workingtemperat	120°C/248F
Max. rev:	2950rpm
Motor Power:	0.37kw~132kw
Voltage:	220V,380V
Motor:	AFT, 50hz/60hz
Available Connection:	Flange(EN1092-2,ISO7005-2)
Operated:	Electric
Application Scope:	Water supply, Heating system, Industrial production, fire-fighting system, air-conditioning system,Irrigation
Packaging Details:	Wooden box
Delivery details:	7-20 days after receiving payment
Brand:	LYSON or OEM



Processing Plant Vertical Multistage Fire Fighting Pumps Electric Centrifugal Fire Pump  
Fire Fighting Pump

Overview

Quick Details

Brand Name:	LYSON
Model Number:	XBD6.0/5G-QDL
Place of Origin:	Shanghai, China
Pressure:	High Pressure
Structure:	Multistage Pump
Theory:	Centrifugal Pump
Usage:	Water
Power:	Electric
Standard or Nonstandard:	Standard
Fuel:	Diesel
Application:	FIRE
Product name:	Processing Plant Vertical Multistage Fire Fighting Pumps
Material:	Steel
Voltage:	220V/380V
Certificate:	ISO9001:2008
Color:	Red
Type:	Watering
Warranty:	1 Year
Name:	DC PUMP
Motor:	DC Motor
Feature:	High Efficiency

## Product details

### Production Description:

#### Product Introduction:

LQDL/LQDLF consists of a electric motor and a pump head. Motor shaft is connected to pump shaft with coupler. They may be directly installed in horizontal pipeline systems to get compact structures and save space.

#### Product Application

The LQDL pumps and the LQDLF pumps are multifunctional products, which can be used for conveying diversified mediums such as running water and industrial liquids. They are applicable to different temperature ranges, flow ranges, and pressure ranges. The LQDL pumps are applied to noncorrosive liquids, and the LQDLF pumps are applied to slightly corrosive liquids.

### Specification

Product Name:	LQDL/LQDLF Stainless Steel Vertical Multistage Centrifugal Water Pump
Material:	Cast iron/Stainless Steel
Seal Material:	Graphite/ silicon carbide
Max. Flow:	240m3/h/ 1057GPM
Max. Head:	300m
Max. Pressure:	33bar/479psi
Max Workingtemperat	120°C/248F
Max. rev:	2950rpm
Motor Power:	0.37kw~132kw
Voltage:	220V,380V
Motor:	AFT, 50hz/60hz
Available Connection:	Flange(EN1092-2,ISO7005-2)
Operated:	Electric
Application Scope:	Water supply, Heating system, Industrial production, fire-fighting system, air-conditioning system,Irrigation
Packaging Details:	Wooden box
Delivery details:	7-20 days after receiving payment
Brand:	LYSON or OEM

**По вопросам продаж и поддержки обращайтесь:**

Алматы (7273)495-231  
Архангельск (8182)63-90-72  
Астрахань (8512)99-46-04  
Барнаул (3852)73-04-60  
Белгород (4722)40-23-64  
Брянск (4832)59-03-52  
Владивосток (423)249-28-31  
Волгоград (844)278-03-48  
Вологда (8172)26-41-59  
Воронеж (473)204-51-73  
Екатеринбург (343)384-55-89  
Иваново (4932)77-34-06  
Ижевск (3412)26-03-58  
Иркутск (395)279-98-46  
Россия (495)268-04-70

Казань (843)206-01-48  
Калининград (4012)72-03-81  
Калуга (4842)92-23-67  
Кемерово (3842)65-04-62  
Киров (8332)68-02-04  
Краснодар (861)203-40-90  
Красноярск (391)204-63-61  
Курск (4712)77-13-04  
Липецк (4742)52-20-81  
Магнитогорск (3519)55-03-13  
Москва (495)268-04-70  
Мурманск (8152)59-64-93  
Набережные Челны (8552)20-53-41  
Нижний Новгород (831)429-08-12  
Киргизия (996)312-96-26-47

Новокузнецк (3843)20-46-81  
Новосибирск (383)227-86-73  
Омск (3812)21-46-40  
Орел (4862)44-53-42  
Оренбург (3532)37-68-04  
Пенза (8412)22-31-16  
Пермь (342)205-81-47  
Ростов-на-Дону (863)308-18-15  
Рязань (4912)46-61-64  
Самара (846)206-03-16  
Санкт-Петербург (812)309-46-40  
Саратов (845)249-38-78  
Севастополь (8692)22-31-93  
Симферополь (3652)67-13-56  
Казахстан (7172)727-132

Смоленск (4812)29-41-54  
Сочи (862)225-72-31  
Ставрополь (8652)20-65-13  
Сургут (3462)77-98-35  
Тверь (4822)63-31-35  
Томск (3822)98-41-53  
Тула (4872)74-02-29  
Тюмень (3452)66-21-18  
Ульяновск (8422)24-23-59  
Уфа (347)229-48-12  
Хабаровск (4212)92-98-04  
Челябинск (351)202-03-61  
Череповец (8202)49-02-64  
Ярославль (4852)69-52-93