

QDWJ(T)

Технические характеристики

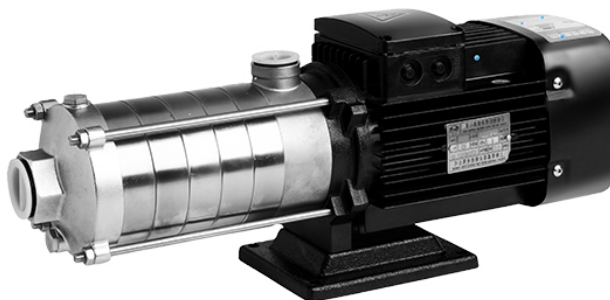
По вопросам продаж и поддержки обращайтесь:

Алматы (7273)495-231
Архангельск (8182)63-90-72
Астрахань (8512)99-46-04
Барнаул (3852)73-04-60
Белгород (4722)40-23-64
Брянск (4832)59-03-52
Владивосток (423)249-28-31
Волгоград (844)278-03-48
Вологда (8172)26-41-59
Воронеж (473)204-51-73
Екатеринбург (343)384-55-89
Иваново (4932)77-34-06
Ижевск (3412)26-03-58
Иркутск (395)279-98-46
Россия (495)268-04-70

Казань (843)206-01-48
Калининград (4012)72-03-81
Калуга (4842)92-23-67
Кемерово (3842)65-04-62
Киров (8332)68-02-04
Краснодар (861)203-40-90
Красноярск (391)204-63-61
Курск (4712)77-13-04
Липецк (4742)52-20-81
Магнитогорск (3519)55-03-13
Москва (495)268-04-70
Мурманск (8152)59-64-93
Набережные Челны (8552)20-53-41
Нижний Новгород (831)429-08-12
Киргизия (996)312-96-26-47

Новокузнецк (3843)20-46-81
Новосибирск (383)227-86-73
Омск (3812)21-46-40
Орел (4862)44-53-42
Оренбург (3532)37-68-04
Пенза (8412)22-31-16
Пермь (342)205-81-47
Ростов-на-Дону (863)308-18-15
Рязань (4912)46-61-64
Самара (846)206-03-16
Санкт-Петербург (812)309-46-40
Саратов (845)249-38-78
Севастополь (8692)22-31-93
Симферополь (3652)67-13-56
Казахстан (7172)727-132

Смоленск (4812)29-41-54
Сочи (862)225-72-31
Ставрополь (8652)20-65-13
Сургут (3462)77-98-35
Тверь (4822)63-31-35
Томск (3822)98-41-53
Тула (4872)74-02-29
Тюмень (3452)66-21-18
Ульяновск (8422)24-23-59
Уфа (347)229-48-12
Хабаровск (4212)92-98-04
Челябинск (351)202-03-61
Череповец (8202)49-02-64
Ярославль (4852)69-52-93



LYSON Stainless Steel Light Type Centrifugal Horizontal Multistage Water Pump

Overview

Quick Details

Brand Name:	LYSON
Model Number:	LQDWF
Place of Origin:	Shanghai, China
Pressure:	High Pressure
Structure:	SCREW PUMP
Theory:	Centrifugal Pump
Usage:	Water
Power:	Electric
Standard or Nonstandard:	Standard
Application:	Cryogenic
Fuel:	Electric
Color:	Black
Product name:	LQDWF
Material:	Stainless Steel
Motor:	100% Copper Wire
Warranty:	2 Years
Certificate:	ISO9001:2008
Feature:	High Efficiency
Voltage:	220V/380V
Type:	Watering
Name:	DC PUMP

Product details

Production Description:

Product Introduction:

LQDWJ (T) pumps are stainless steel light horizontal sectional multistage centrifugal pumps.

- > The motor shafts are extended ones with a compact structure, so the pumps are very small.
- > Liquids flow into the pumps via the axial inlets and out the pumps via the radial outlets, to ensure stable running of the pumps.

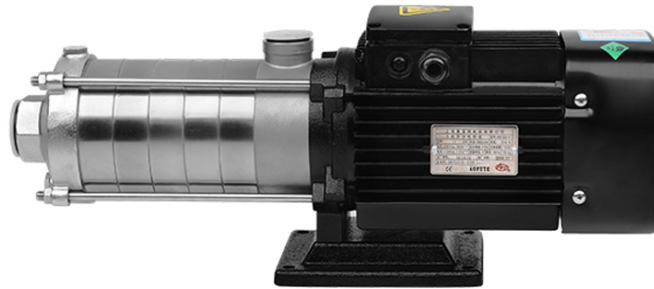
Product Application:

- > Air-conditioning systems
- > Cooling systems
- > Flushing and cleaning systems
- > Water treatment systems
- > Aquaculture

Specification

Product Name:	LQDWJ(T) Stainless Steel Horizontal Sectional Multistage Centrifugal Water Pump
Material:	Cast iron/Stainless Steel
Seal Material:	Graphite/ silicon carbide
Max. Flow:	28m ³ /h/ 123GPM
Max. Head:	60m
Max. Pressure:	6bar/87psi
Max. Working temperature:	120°C/248F
Max. rev:	2950rpm
Motor Power:	0.37kw~4.4kw
Voltage:	220V,380V
Motor:	AFT, 50hz/60hz

Available Connection:	Flange(EN1092-2,ISO7005-2)
Operated:	Electric
Application Scope:	Air-conditioning systems, Cooling systems, Flushing and cleaning systems, Water treatment systems, Aquaculture
Packaging Details:	Wooden box
Delivery details:	7-20 days after receiving payment
Brand:	LYSON or OEM



Industrial Widely Used Stainless Steel Centrifugal Water Pump

Overview

Quick Details

Brand Name:	LYSON
Model Number:	QDWJ(T) 2-60
Place of Origin:	Shanghai, China
Pressure:	High Pressure
Structure:	Multistage Pump
Theory:	Centrifugal Pump
Usage:	Water
Power:	Electric
Standard or Nonstandard:	Standard
Fuel:	electric
Application:	Water
Material:	Stainless Steel 304
Product name:	stainless steel pump
Voltage:	220V/380V
Certificate:	ISO9001:2008
Motor:	100% Copper Wire
Name:	Multistage pump
Color:	Customer Specifications
Feature:	Long Life
Type:	Watering
Warranty:	1 Year

Product details

Production Description:

Product Introduction:

LQDWJ (T) pumps are stainless steel light horizontal sectional multistage centrifugal pumps.

- > The motor shafts are extended ones with a compact structure, so the pumps are very small.
- > Liquids flow into the pumps via the axial inlets and out the pumps via the radial outlets, to ensure stable running of the pumps.

Product Application:

- > Air-conditioning systems
- > Cooling systems
- > Flushing and cleaning systems
- > Water treatment systems
- > Aquaculture

Specification

Product Name:	LQDWJ(T) Stainless Steel Horizontal Sectional Multistage Centrifugal Water Pump
Material:	Cast iron/Stainless Steel
Seal Material:	Graphite/ silicon carbide
Max. Flow:	28m ³ /h/ 123GPM
Max. Head:	60m
Max. Pressure:	6bar/87psi
Max. Working temperature:	120°C/248F
Max. rev:	2950rpm
Motor Power:	0.37kw~4.4kw
Voltage:	220V,380V
Motor:	AFT, 50hz/60hz

Available Connection:	Flange(EN1092-2,ISO7005-2)
Operated:	Electric
Application Scope:	Air-conditioning systems, Cooling systems, Flushing and cleaning systems, Water treatment systems, Aquaculture
Packaging Details:	Wooden box
Delivery details:	7-20 days after receiving payment
Brand:	LYSON or OEM



Electric Centrifugal Water Pump For Irrigation

Overview

Quick Details

Brand Name:	Lyson
Model Number:	LQDWJ(T) 20-30
Place of Origin:	Shanghai, China
Pressure:	High Pressure
Structure:	Multistage Pump
Theory:	Centrifugal Pump
Usage:	Water
Power:	Electric
Standard or Nonstandard:	Standard
Fuel:	Other
Application:	Water
Material:	Stainless
Color:	Black
Warranty:	1 Year
Voltage:	220V/380V
Feature:	High Efficiency
Certificate:	CE Certificate
Type:	Horizontal
Name:	Agriculture Irrigation Tools
Product name:	High
Motor:	DC Motor

Product details

Production Description:

Product Introduction:

LQDWJ (T) pumps are stainless steel light horizontal sectional multistage centrifugal pumps.

- > The motor shafts are extended ones with a compact structure, so the pumps are very small.
- > Liquids flow into the pumps via the axial inlets and out the pumps via the radial outlets, to ensure stable running of the pumps.

Product Application:

- > Air-conditioning systems
- > Cooling systems
- > Flushing and cleaning systems
- > Water treatment systems
- > Aquaculture

Specification

Product Name:	LQDWJ(T) Stainless Steel Horizontal Sectional Multistage Centrifugal Water Pump
Material:	Cast iron/Stainless Steel
Seal Material:	Graphite/ silicon carbide
Max. Flow:	28m ³ /h/ 123GPM
Max. Head:	60m
Max. Pressure:	6bar/87psi
Max. Working temperature:	120°C/248F
Max. rev:	2950rpm
Motor Power:	0.37kw~4.4kw
Voltage:	220V,380V
Motor:	AFT, 50hz/60hz

Available Connection:	Flange(EN1092-2,ISO7005-2)
Operated:	Electric
Application Scope:	Air-conditioning systems, Cooling systems, Flushing and cleaning systems, Water treatment systems, Aquaculture
Packaging Details:	Wooden box
Delivery details:	7-20 days after receiving payment
Brand:	LYSON or OEM



Stainless Steel Multistage Vertical Pump

Overview

Quick Details

Brand Name:	LYSON
Model Number:	LQDWJ(T) 1-2
Place of Origin:	Shanghai, China
Pressure:	High Pressure
Structure:	Other
Theory:	Centrifugal Pump
Usage:	Water
Power:	Electric
Standard or Nonstandard:	Standard
Fuel:	electrical
Application:	wate
Color:	Silver
Certificate:	ISO9001 CE
Warranty:	1 Year
Material:	stainless steel
Motor:	100% Copper Wire
Voltage:	220V/380V
Feature:	High Flow
Product name:	Stainless Steel Multistage Vertical Pump
Type:	Watering
Name:	DC PUMP

Product details

Production Description:

Product Introduction:

LQDL/LQDLF consists of a electric motor and a pump head. Motor shaft is connected to pump shaft with coupler. They may be directly installed in horizontal pipeline systems to get compact structures and save space.

Product Application

The LQDL pumps and the LQDLF pumps are multifunctional products, which can be used for conveying diversified mediums such as running water and industrial liquids. They are applicable to different temperature ranges, flow ranges, and pressure ranges. The LQDL pumps are applied to noncorrosive liquids, and the LQDLF pumps are applied to slightly corrosive liquids.

Specification

Product Name:	LQDL/LQDLF Stainless Steel Vertical Multistage Centrifugal Water Pump
Material:	Cast iron/Stainless Steel
Seal Material:	Graphite/ silicon carbide
Max. Flow:	240m3/h/ 1057GPM
Max. Head:	300m
Max. Pressure:	33bar/479psi
Max. Workingtemperat	120°C/248F
Max. rev:	2950rpm
Motor Power:	0.37kw~132kw
Voltage:	220V.380V
Motor:	AFT, 50hz/60hz
Available Connection:	Flange(EN1092-2,ISO7005-2)
Operated:	Electric
Application Scope:	Water supply, Heating system, Industrial production, fire-fighting system, air-conditioning system,Irrigation
Packaging Details:	Wooden box
Delivery details:	7-20 days after receiving payment
Brand:	LYSON or OEM



Horizontal Multistage Centrifugal Portable Water Pump Swimming Pool Heat Pump Pumps For Water

Overview

Quick Details

Brand Name:	Lyson
Model Number:	QDWJ(T) 16-10
Place of Origin:	Shanghai, China
Pressure:	High Pressure
Structure:	Multistage Pump
Theory:	Centrifugal Pump
Usage:	Water
Power:	Electric
Standard or Nonstandard:	Standard
Fuel:	Other
Application:	Water
Material:	Stainless Steel
Product name:	high pressure pump
Voltage:	220V/380V
Type:	Vertical
Color:	Black
Certificate:	CE Certificate
Warranty:	One Year
Name:	DC PUMP
Motor:	DC Motor
Feature:	High Efficiency

Product details

Production Description:

Product Introduction:

LQDWJ (T) pumps are stainless steel light horizontal sectional multistage centrifugal pumps.

- > The motor shafts are extended ones with a compact structure, so the pumps are very small.
- > Liquids flow into the pumps via the axial inlets and out the pumps via the radial outlets, to ensure stable running of the pumps.

Product Application:

- > Air-conditioning systems
- > Cooling systems
- > Flushing and cleaning systems
- > Water treatment systems
- > Aquaculture

Specification

Product Name:	LQDWJ(T) Stainless Steel Horizontal Sectional Multistage Centrifugal Water Pump
Material:	Cast iron/Stainless Steel
Seal Material:	Graphite/ silicon carbide
Max. Flow:	28m ³ /h/ 123GPM
Max. Head:	60m
Max. Pressure:	6bar/87psi
Max. Working temperature:	120°C/248F
Max. rev:	2950rpm
Motor Power:	0.37kw~4.4kw
Voltage:	220V,380V
Motor:	AFT, 50hz/60hz
Available Connection:	Flange(EN1092-2,ISO7005-2)

Operated:	Electric
Application Scope:	Air-conditioning systems, Cooling systems, Flushing and cleaning systems, Water treatment systems, Aquaculture
Packaging Details:	Wooden box
Delivery details:	7-20 days after receiving payment
Brand:	LYSON or OEM



Household Pump Variable Frequency Pumps Constant Pressure Pump

Overview

Quick Details

Brand Name:	LYSON
Model Number:	LQDWJT 4-50
Place of Origin:	Shanghai, China
Pressure:	High Pressure
Structure:	Other
Usage:	Water
Power:	Electric
Standard or Nonstandard:	Standard
Theory:	Other
Fuel:	Other
Application:	water
Color:	Blue
Product name:	Constant Pressure Variable Frequency Water Pumps
Material:	Steel
Voltage:	220V/380V
Certificate:	ISO9001:2008
Type:	Watering
Warranty:	One Year
Name:	DC PUMP
Motor:	DC Motor
Feature:	High Efficiency

Product details

Production Description:

Product Introduction:

LQDWJ (T) pumps are stainless steel light horizontal sectional multistage centrifugal pumps.

- > The motor shafts are extended ones with a compact structure, so the pumps are very small.
- > Liquids flow into the pumps via the axial inlets and out the pumps via the radial outlets, to ensure stable running of the pumps.

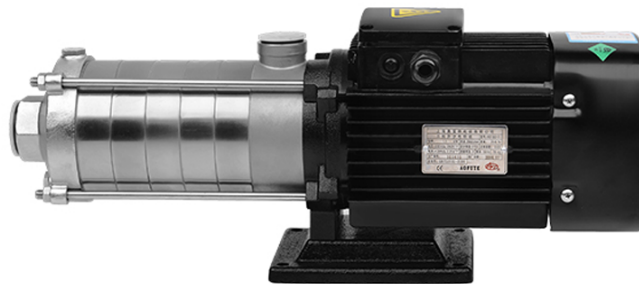
Product Application:

- > Air-conditioning systems
- > Cooling systems
- > Flushing and cleaning systems
- > Water treatment systems
- > Aquaculture

Specification

Product Name:	LQDWJ(T) Stainless Steel Horizontal Sectional Multistage Centrifugal Water Pump
Material:	Cast iron/Stainless Steel
Seal Material:	Graphite/ silicon carbide
Max. Flow:	28m ³ /h/ 123GPM
Max. Head:	60m
Max. Pressure:	6bar/87psi
Max. Working temperature:	120°C/248F
Max. rev:	2950rpm
Motor Power:	0.37kw~4.4kw
Voltage:	220V,380V
Motor:	AFT, 50hz/60hz

Available Connection:	Flange(EN1092-2,ISO7005-2)
Operated:	Electric
Application Scope:	Air-conditioning systems, Cooling systems, Flushing and cleaning systems, Water treatment systems, Aquaculture
Packaging Details:	Wooden box
Delivery details:	7-20 days after receiving payment
Brand:	LYSON or OEM



Electric Stainless Steel Light Horizontal Multi-Stage Centrifugal Pumps Factory Direct Pump

Overview

Quick Details

Brand Name:	Lyson
Model Number:	LQDWJ(T) 2-40
Place of Origin:	Shanghai, China
Pressure:	High Pressure
Structure:	Multistage Pump
Theory:	Centrifugal Pump
Usage:	Water
Power:	Electric
Standard or Nonstandard:	Standard
Application:	Submersible
Fuel:	motor
Certificate:	ISO9001:2008
Color:	Black
Material:	Stainless Steel 304
Product name:	Submersible Water Pump
Voltage:	220V/380V
Warranty:	2 Years
Feature:	Long Life
Name:	DC Submersible Water Pump
Type:	Watering
Motor:	DC Motor

Product details

Production Description:

Product Introduction:

LQDWJ (T) pumps are stainless steel light horizontal sectional multistage centrifugal pumps.

- > The motor shafts are extended ones with a compact structure, so the pumps are very small.
- > Liquids flow into the pumps via the axial inlets and out the pumps via the radial outlets, to ensure stable running of the pumps.

Product Application:

- > Air-conditioning systems
- > Cooling systems
- > Flushing and cleaning systems
- > Water treatment systems
- > Aquaculture

Specification

Product Name:	LQDWJ(T) Stainless Steel Horizontal Sectional Multistage Centrifugal Water Pump
Material:	Cast iron/Stainless Steel
Seal Material:	Graphite/ silicon carbide
Max. Flow:	28m ³ /h/ 123GPM
Max. Head:	60m
Max. Pressure:	6bar/87psi
Max. Working temperature:	120°C/248F
Max. rev:	2950rpm
Motor Power:	0.37kw~4.4kw
Voltage:	220V,380V
Motor:	AFT, 50hz/60hz
Available Connection:	Flange(EN1092-2,ISO7005-2)

Operated:	Electric
Application Scope:	Air-conditioning systems, Cooling systems, Flushing and cleaning systems, Water treatment systems, Aquaculture
Packaging Details:	Wooden box
Delivery details:	7-20 days after receiving payment
Brand:	LYSON or OEM

По вопросам продаж и поддержки обращайтесь:

Алматы (7273)495-231
Архангельск (8182)63-90-72
Астрахань (8512)99-46-04
Барнаул (3852)73-04-60
Белгород (4722)40-23-64
Брянск (4832)59-03-52
Владивосток (423)249-28-31
Волгоград (844)278-03-48
Вологда (8172)26-41-59
Воронеж (473)204-51-73
Екатеринбург (343)384-55-89
Иваново (4932)77-34-06
Ижевск (3412)26-03-58
Иркутск (395)279-98-46
Россия (495)268-04-70

Казань (843)206-01-48
Калининград (4012)72-03-81
Калуга (4842)92-23-67
Кемерово (3842)65-04-62
Киров (8332)68-02-04
Краснодар (861)203-40-90
Красноярск (391)204-63-61
Курск (4712)77-13-04
Липецк (4742)52-20-81
Магнитогорск (3519)55-03-13
Москва (495)268-04-70
Мурманск (8152)59-64-93
Набережные Челны (8552)20-53-41
Нижний Новгород (831)429-08-12
Киргизия (996)312-96-26-47

Новокузнецк (3843)20-46-81
Новосибирск (383)227-86-73
Омск (3812)21-46-40
Орел (4862)44-53-42
Оренбург (3532)37-68-04
Пенза (8412)22-31-16
Пермь (342)205-81-47
Ростов-на-Дону (863)308-18-15
Рязань (4912)46-61-64
Самара (846)206-03-16
Санкт-Петербург (812)309-46-40
Саратов (845)249-38-78
Севастополь (8692)22-31-93
Симферополь (3652)67-13-56
Казахстан (7172)727-132

Смоленск (4812)29-41-54
Сочи (862)225-72-31
Ставрополь (8652)20-65-13
Сургут (3462)77-98-35
Тверь (4822)63-31-35
Томск (3822)98-41-53
Тула (4872)74-02-29
Тюмень (3452)66-21-18
Ульяновск (8422)24-23-59
Уфа (347)229-48-12
Хабаровск (4212)92-98-04
Челябинск (351)202-03-61
Череповец (8202)49-02-64
Ярославль (4852)69-52-93